



930 Corbindale Road
Houston, TX 77024

RETURN SERVICE REQUESTED

NONPROFIT ORG.
U.S. POSTAGE
PAID
HOUSTON, TX
PERMIT #6004



NEWSLETTER

The Friends of the Spring Branch-Memorial Library

December
2017

'Tis the season for giving and for gratitude....



From you we have received...*

DONATIONS from individuals, matching grants, and loyalty programs (Amazon, Kroger, Randalls) made up 21% of contributions. Wonderful! THANK YOU!

LOBBY BOOKS generated 22% of our funds available to support our Library! Enjoy! ...and THANK YOU!

BUY-A-BOOK (BAB) contributed 4% of contributions**—a wonderful way to honor book-loving friends! THANK YOU!

MEMBERSHIPS made up 20% of contributions. Your membership matters! THANK YOU!

THE PLANT AND BOOK FESTIVAL provided 33% of contributions this year. An amazing event! THANK YOU!

*From January through October 2017 **Most BAB donations are received in December. Projected contributions equal 14%.

Inside This Newsletter...

happy holidays!

- 'Tis the season for giving and for gratitude
- Santa's coming!
- Helping After Harvey
- 2017 Buy-A-Book
- Lobby Books—gifts for all!

REGULAR LIBRARY HOURS

SUN CLOSED MON 1PM - 9PM TUES 10AM - 9PM WED 10AM - 6PM
THUR 10AM - 6PM FRI 1PM - 6PM SAT 10AM - 5PM

THE LIBRARY WILL BE CLOSED FROM 5PM DECEMBER 22 THROUGH DECEMBER 26 AND CLOSING AT 5PM DECEMBER 29 THROUGH JANUARY 1 REOPENING JANUARY 2.

ALSO CLOSED JANUARY 15 FOR MLK DAY. HAPPY HOLIDAYS!

Spring Branch-Memorial Library Website

www.hcpl.net/location/spring-branch-memorial-branch-library

So to the Library we could give....*

30% of all contributions go for our CONTRACT LIBRARIAN to support our busy Library! A gift to us all!

37% of all contributions go to BUY-A-BOOK purchases split between the adults' and the children's collections.**

15% of all contributions go to E-BOOK purchases so we can enjoy the Library anywhere!

7% of all contributions go for ADULT and especially our new YOUNG ADULT PROGRAMS—to be expanding!

11% of all contributions go for CHILDREN'S PROGRAMS—art and craft supplies, summer programs and MORE!

*From January through October 2017 **Most BAB purchases are from donations made in 2016.


Between newsletters, keep up with the Friends on our website at www.friendsofsbml.org
or contact us at friends.sbm@hotmail.com

For it is in giving that we receive. —St. Francis of Assisi



Kid Happenings

Tickets to Kid Happenings events are **free** 30 minutes ahead of most events—and the **Friends of the SB-M Library contribute funds to provide occasional snacks and cooking and crafts supplies.**




He's making a list...
and visiting twice...
going to find out
who's **naughty** and **nice!**

Monday, December 4
5:30 p.m. or 6:15 p.m. or 7:00 p.m.
.....
Wednesday, December 6
3:30 p.m. or 4:15 p.m. or 5:00 p.m.

**Santa Claus is coming to
Spring Branch-Memorial Library!**

Enjoy holiday snacks,
a story with Santa, and
take your turn on Santa's lap for
a free photo (bring your camera!)
and sharing your list!

Space is limited in each group.
Free tickets will be available
30 minutes prior to program.



Spring Branch-Memorial Library
930 Corbindale, Houston TX 77024
(713) 464-1633 ■ www.hcpl.net

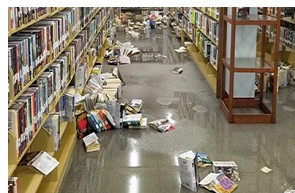
With special thanks to the Friends of the Spring Branch-Memorial Library! They are on Santa's "nice" list!
Programs and services are Americans with Disabilities Act (ADA) compliant. Special accommodations can be requested in advance by contacting the library.

**HARRIS COUNTY
PUBLIC LIBRARY**
your pathway to knowledge

"Thanks to the support of the Friends (whose contacts at the North Pole are truly outstanding!), we will have *additional* sessions with Santa this year so all our Spring Branch-Memorial Library families who wish to participate should be able to have time with Santa." (*abridged*)
—Ms. Wendy, Children's Services Specialist

Helping Flooded Harris County Libraries Rebuild— Libraries are a gift to us all!

Although our SB-M Library did not flood in Hurricane Harvey, **FOUR** of our Harris County Libraries **DID!** You can help these libraries rebuild their collections and become functional members of the county



system again by sending a check to our Friends organization at OUR library with "For Flooded Libraries" in the memo line. Or go to our [website](http://www.friendsofsbml.org) in the "More" tab and pay with PayPal. **We can help get those doors open again!**

REGULAR ONGOING PROGRAMS

Baby Time is every Wednesday at 10:00-10:30AM or 10:45-11:15AM for infants 0-15 months and parents/caregivers. Come for a stories, rhymes, songs, and social time.

Come to **Toddler Time** on Wednesdays 11:30AM to noon or Thursdays 10:00-10:30AM. These story times feature stories, songs, rhymes, finger plays and fun for children ages 16 months to three years.

Preschool Storytime & Craft for three to six year olds is scheduled each Thursday at 11:00-11:30AM. Enjoy stories, songs, rhymes and a craft project.

School-Age Children enjoy regular programs on Wednesdays at 4:00-5:00PM in a monthly rotation with Reading with a Furry Friend (1st week), Cooks & Books (2nd week), Creative Corner (3rd week), and Country Club (4th week) each month.

Teens and Tweens come on Fridays at 4:00-5:00PM for Game Board Nation (Grades 3 and up)—except for holiday weeks. **The Friends provides funds for new games and flashdrives for Teen coding classes.**

Join us!
...and
ask a
friend
to be a
Friend!



Membership Application or Renewal

We do not share any of your information with anyone outside our organization.

*Name: _____

*Address: _____

*City, State, Zip: _____

Phone: _____

*Email Address: _____

☐ \$10 General ☐ \$25 Family ☐ \$50 Associate ☐ \$100 Patron

☐ Please change my address. ☐ Please send my newsletter by ground mail only.

☐ Please increase my membership to \$_____. ☐ I would like to volunteer with the Friends.

☐ I would like to make an additional contribution of \$_____.

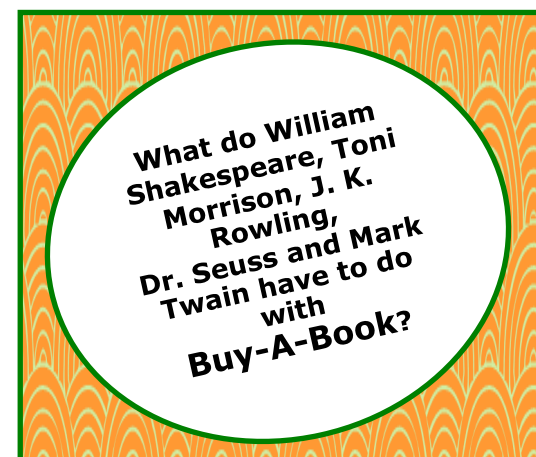
Please make checks payable to: Friends of the Spring Branch-Memorial Library

Mailing address: 930 Corbindale Road, Houston, TX 77024

OR with PayPal on our website: www.friendsofsbml.org/joinrenew

* Required entries

Contributions are tax deductible.



Find the answer to this question
in the
2017 Buy-A-Book Brochure!

**Coming soon!
Watch for it!**

Look for this year's brochure in your mailbox...or at the Library or online at www.friendsofsbml.org/buy-a-book.html

Discover how you can be **PART of the ANSWER!**



REMEMBER—Lobby Books at the Library entrance are always a great source of pleasure throughout the year for a small donation—and are especially a source for thoughtful giving at the holiday season! These may be seasonal books as well as



fiction, nonfiction, and children's books. A group of **the Friends** sorts donated books weekly to provide YOU with the best selection of quality books suitable for giving. (And while you are buying for those on your lists, pick up something for yourself too!) *The librarians will happily accept your donations for these "as new" books!*