



930 Corbindale Road
Houston, TX 77024

RETURN SERVICE REQUESTED

NONPROFIT ORG.
U.S. POSTAGE
PAID
HOUSTON, TX
PERMIT #8327



NEWSLETTER

The Friends of the Spring Branch-Memorial Library

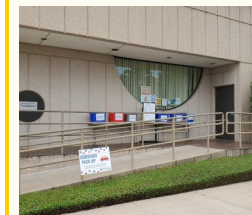
Fall 2020

During this time of social distancing while libraries remain closed to the public, our Library remains a wonderful resource! We can still travel...learn...escape to different times and places VIRTUALLY—and all we need is our library card!



Our Library is STILL a busy place!

Keeping our Library Lively with Curbside Checkout...Book Bundles...Virtual Programs....



Although we cannot enter our Library, the librarians are still there serving us all!

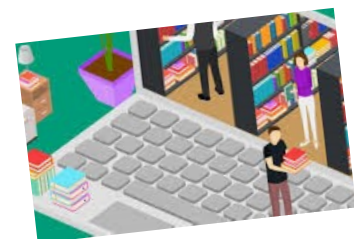
- They answer the phone to answer questions and to prepare and check out items when we arrive for our holds through Curbside Checkout. We checked out **more than 25,000 books and media** through this service with more than **3,300 individual cars** coming for books and supplies!
- They receive 12-14 tubs of books DAILY to check in and to prepare for Hold requests.
- They prepare Book Bundles for all ages —random selections for open claiming at Curbside pickup and others focused for personal requests by individual patrons. *(Did you know they will collect books on any topic or theme that you would like and make a “personal bundle” for your enjoyment?)*

You can also make digital requests for Book Bundles online! (Link on page 2)

- They provided **more than 660 Activity Kits**—available on a first-come-first serve basis at Curbside pickup.
- They create and lead virtual programs for the whole system—**28 virtual programs** produced by OUR librarians with **1,450 views** on their Facebook site.
- They quarantine, check in and shelve returned books and borrowed media, and pull requests from our own shelves.
- They remove and relocate any expired, unclaimed items from the Holds.
- AND in their spare time, they do trainings, plan future programs and review our own collection for relevance!

(All data is from June and July alone—the most recent “summer” statistics available at this time.)

Our Library and our Librarians do SO MUCH for us all. The Friends is HAPPY to support them with their extra-budget needs as they support our whole community!



Inside This Newsletter...

- Virtual Library...Actual Activity!
- Directions and links to our virtual Library
- The Friends **actual** support in **virtual** times

REGULAR LIBRARY HOURS (Subject to change until full service resumes.)

SUN	CLOSED	MON	10AM - 6PM	TUES	10AM - 6PM	WED	10AM - 6PM
		THUR	10AM - 6PM	FRI	1PM - 6PM	SAT	10AM - 5PM

Spring Branch-Memorial Library Website

www.hcpl.net/location/spring-branch-memorial-branch-library

...and on Facebook: www.facebook.com/pg/springbranchmemoriallibrary/posts/?ref=page_internal

Between newsletters, keep up with *The Friends* on our website at www.friendsofsbml.org or email us at friends.sbm@hotmail.com

Please note: Any Membership updates after August 15 will appear on your December newsletter.



We patrons are busy people too!

During the same June-July time period, checkouts on OverDrive (the county system's e-Book/audiobook digital collection) OUR LIBRARY ALONE totaled **42,857 digital loans!** Our digital media stats were up 25% in June and 40% in July compared to last year's circulation. **The Friends regularly contributes to the purchase of eBooks** for the system because we all benefit too.

...And OUR LIBRARY had 399 participants in the Summer Reading Program!

Our Library is truly a valuable community resource that deserves our support—even in COVID times!

You may not control all the events that happen to you, but you can decide not to be reduced by them.
—Maya Angelou, American poet, memoirist and activist





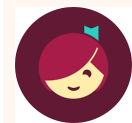
Feeling “adrift” about finding programs and services at our virtual Library?



How do I find...?

If you know **WHAT** you are looking for, but not **WHERE**, go to our [Library's home page](#) and enter the name in the Search bar. Then choose the Books and Media tab to filter for more specific media types and other information. There is also a tab there to find related Events.

Books and media: Checking out “real” and digital books and media is EASY from the Library’s home page using the Search bar, but if you have trouble, you can call or [email](#) our Library and our librarians will be happy to help you. For FAST AND DIRECT DIGITAL ACCESS (Android and iOS), consider downloading [Libby](#), an easy app from [Overdrive](#), the digital library for the whole county-wide system.



If you do not know what you want and just want some recommendations...



- Try **Book Bundles**—either pre-made and available at the Curbside Pick-up location AT OUR LIBRARY OR by customized [request online](#) as described on page 1.
- Our **Page Turners Book Group** continues to meet (virtually, of course) monthly. If interested, email the Library for more information.
- See Reese Witherspoon’s **Hello Sunshine book group** suggestions on our Library’s Facebook page.
- Both **OverDrive** and **Libby** sites offer suggestions for digital reads.



Events: Of course, all events remain “virtual” at this time and are open to all throughout the system.

- To explore the **full range of events**, you can browse all events throughout the system from the [HCPL Events](#) page OR from our Library’s home page—then click Events above the Search bar. From either site, filters are available to focus on specific subsets of events.
- For the events calendar **sponsored by OUR Library**, start as above and using the filter for “Branch”, choose Spring Branch-Memorial.
- For a **particular interest**, use the Library’s home page as described above. Then use the Books and Media tab and from there, click the Events tab.
- For more **fun stuff**, see **OUR Library’s posts**—past, present and future—on its Facebook site!

You might consider making a Library folder on your Bookmark bar to access all these websites easily!

For “USPS only” Friends—

[Links in this newsletter](#) In order of appearance:

Facebook—<https://www.facebook.com/pg/springbranchmemoriallibrary/posts/>

Library’s Home Page—<https://www.hcpl.net/branch/spring-branch-memorial-branch-library>

Library’s email—sm@hcpl.net

Libby— <https://www.overdrive.com/apps/libby/>

utm_origin=lightning&utm_page_genre=tout&utm_list=meet_libby&utm_content=libby_tout_learnmore_06019018

OverDrive—<https://hcpl.overdrive.com/>

Request online (Book Bundles)—<https://www.hcpl.net/services/book-bundles>

HPCL Events—<https://www.hcpl.net/events>

Coupon Board—<https://www.friendsofsbml.org/coupons-from-our-virtual-coupon-board.html>



Membership Application: ☐ New or ☐ Renew We do not share any of your information with anyone outside our organization.

*Name: _____

*Address: _____

*City. State. Zip: _____

Phone: _____

*Email Address: _____

☐ \$10 Sponsor ☐ \$25 Leader ☐ \$50 Benefactor ☐ \$100 Supernova ☐ Additional donation \$ _____

☐ Please change my address.

☐ Please send my newsletter by USPS mail only.

☐ I would like to volunteer with the Friends.

Please make checks payable to: Friends of the Spring Branch-Memorial Library

Mailing address: 930 Corbindale Road, Houston, TX 77024

OR pay with PayPal on [our website](#).

* Required for new or changes only

Contributions are tax deductible.

We are sorry to say goodbye to Elizabeth Boggs, our Young Adult Services Librarian. Through her years with us, Elizabeth consistently developed creative, interesting and successful programs for our Teens and Young Adults and we all benefited by her professionalism and her upbeat, positive, can-do attitude.

Elizabeth is now Assistant Manager at the Katherine Tyra Branch Library @ Bear Creek. It is a wonderful career move for her. They are fortunate to have Elizabeth at that branch—and we will miss her!

Q: Since the Library is closed and all programs are virtual, why is funding from *The Friends* still so important?



A. Ongoing need—As you saw on Page 1, Activity Kits are VERY popular and our Librarians are committed to continue making them for people to pick up using the curbside services. Obviously, there is an ongoing need to re-stock craft supplies.

In addition, although the mission of each library’s *Friends* group is to support the extra-budget needs of its own library, we are living in unusual times. While ALL programs are virtual for now, a good program for one library in the system is a benefit to us all! So our Library may ask for a contribution from OUR programs budget to support programs that benefit us AND the wider community. For instance, the Authorama series the library system produced this summer was very popular and there is a possibility of hosting another one this winter with its associated expenses. That kind of program is valuable for us during these times when we do not have access to programs at our own location. So funds from *The Friends* still support OUR Library and our neighborhood as they support the whole system!

SO...The Friends and our Library’s services can use your support this year more than ever! Membership in *The Friends* shows a *high level of commitment and support* for our wonderful Spring Branch-Memorial Library and the services it provides to our own AND the wider community. You can join, renew, or just contribute by using the above form or on our [website](#). Your membership/contribution makes a significant difference in these uncertain times! **Thank you!**

...AND The Friends [Coupon Board](#) is still active!
Take a look to see how YOU can benefit while supporting The Friends!